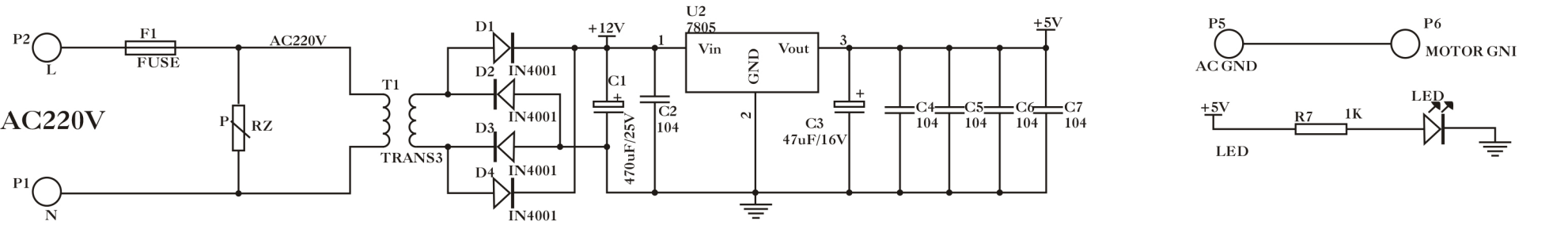


# Motorized Screen Wall Control Wiring Diagram

## IMPORTANT.

The wall remote should only be opened and adjusted by a certified electrician. Further, this presented wall remote is the standard Multibrackets wall remote, but there are or has been other models available to the market. Before taking any action start by identifying the wall remote design by comparing schematic to your actual unit.



- Pin13: RA0-RFIN
- Pin11: RA2-ST
- Pin4: RA3-MCLR
- Pin3: RA4-Down Relay
- Pin2: RA5-Up Relay
  
- Pin10: RC0-Down Key
- Pin9: RC1-Stop Key
- Pin8: RC2-Up Key
- Pin7: RC3-Setup Key
- Pin6: RC4-LED Out

